



MEET US *at the* Marine Room

One of the world's most iconic oceanfront dining experiences and a landmark culinary destination where no matter the occasion you'll leave with a new perspective.

ABOUT

The Marine Room, established in 1941, has become a cherished San Diego spot, attracting celebrities, dignitaries, and locals for its breathtaking ocean views and fine dining.

Under the guidance of Executive Chef Ananda Bareno, The Marine Room constantly evolves its menu, featuring seasonal delights and globally inspired dishes made with local produce and specialty ingredients.



LOCATION

- Downtown San Diego | 12 miles away
- San Diego Airport | 12 miles away
- Scripps Birch Aquarium | 0.5 miles away
- La Jolla Village Shopping District | 1 mile away
- La Jolla Shores Hotel | 0.5 miles away
- La Jolla Beach & Tennis Club | 157 feet

Restaurant Capacity	220
---------------------	-----

EST.  1941

THE MARINE ROOM

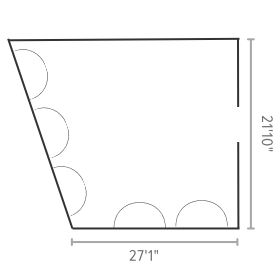
858-459-7222 | CATERING@LJBTC.COM
1950 SPINDRIFT DRIVE, LA JOLLA, CA 92037
CONNECT WITH US ON SOCIAL: @THEMARINEROOM

Capacity Chart & Floor Plans



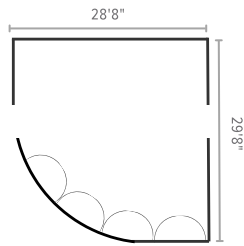
Seahorse Room

Elegant private event space with panoramic ocean views, ideal for intimate gatherings, celebrations, or corporate events.



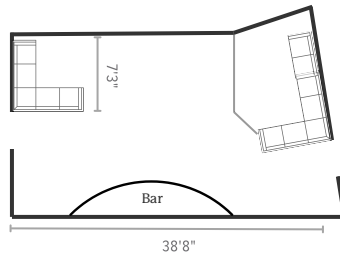
Spindrift

The main dining space at The Marine Room, transforms into a stunning private event space with floor-to-ceiling windows.



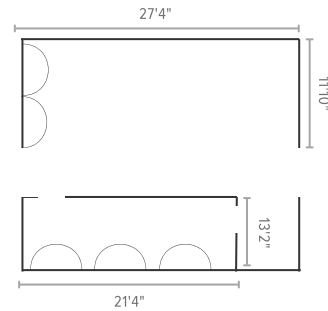
The Lounge

An exclusive oceanfront setting for private events, blending refined elegance with a relaxed coastal atmosphere.



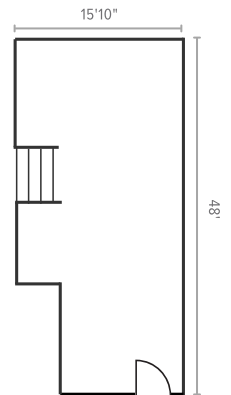
North End

This versatile space is ideal for weddings, corporate events, and milestone celebrations with the ocean as your backdrop.



Terrace

Elevated off the dining room, this space provides panoramic views of the ocean and private beach at La Jolla Beach & Tennis Club.



MEETING ROOM	SEATED DINNER	RECEPTION	GUIDELINES
Seahorse Room	50	30	Private Dining Room
Spindrift	75	40	Must be contracted with the Seahorse Room
The Lounge	25	35	Can only be contracted with a full restaurant buy-out
North End	100	70	Must be contracted with the Terrace
Terrace	20 35 semi-private full private buyout	--	Semi-private dining room applicable for seated dinners only

*Please note: During regular restaurant service, the Terrace can accommodate up to 20 guests. Events exceeding 20 guests require a full private buyout and are subject to availability and approval.